

Newsletter: May 2024

The President's Post

Dear Members,

Welcome,

Autumn has finally arrived with the first rains for many month, my garden is certainly enjoying the change.

I received great feedback from attendees to Tony Bebb's workshops, with members stating it was very enjoyable and they all learned heaps.

One comment which we, the committee, has taken on board was, could we add another day next year as many members would like to bring in extra trees and there were some members who missed out.

David Nassar is booked for June workshops planned for the Saturday 29 Bonsai Workshop, bookings will occur soon.

There is a possibility that Hiro (for those who know him) will be here in early July, we will inform you as we know more, at this moment it is unsure.

Please remember to pay your membership fees as this provides money to pay for our visitors and other club items and needs.

Also Hiro's workbook is now [downloadable](#) from our website as PDF.

I will be providing the second beginners class this month with information on wiring starting at 11:00 am.

I will endeavour to make the session as hands on as possible.

See you all on Saturday.

Michael Kelly

President Bonsai Workshop of W.A

Bonsai Workshop and Beginners Class last Saturday 27 April.



First Beginner Class was well received and I'm convinced that all the participating members are much more confident to choose soil and fertiliser for their Trees.

Tree of the month.



Melaleuca Nesophila **Honey Myrtle**

This plant was purchased as a young tree in 1997 from a nursery with Alf Devine. It has had three different designs over its life to now. Base slab is a *Tasmanian Black Butt*. Accent plant a section of a *Mallee* root.

Greg Young

**Please do not come to the workshop
if you have any flu symptoms!!**

Workshop starts at 12:00PM **25th** May.
Beginners Class starts at 11:00AM.
We will talk about wiring.

Notices

Please remember to wear your name badge to the workshops.

Don't forget to sign the attendance book, this is for insurance

Some links of interest:

<https://bonsaitonight.com/2021/04/09/bonsai-development-series-23-wiring-young-juniper-trunks/>

<https://bonsaitonight.com/2020/09/15/wiring-tip-how-to-prevent-branches-from-splitting-away-from-the-trunk/>

<https://bonsaitonight.com/2013/10/22/wiring-a-tree-into-the-pot/>

To contact us or send some articles/ images for the newsletter here are the addresses:

President: Michael mkelly92501@gmail.com

Secretary: Matti secretary@bonsaiworkshopwa.com

Media: Rolf rolf@aussiebroadband.com.au

Treasurer: Pam captatam@iinet.net.au

For mail: PO Box 279 Scarborough WA 6019

Gathering About Bonsai (GAB 2024)

Meet Other Bonsai Enthusiasts Face to Face, Advance Your Bonsai Knowledge and Learning from experience members and special guests. Sharing Local Knowledge and more.

A weekend to focus on building your skills, whether you are a beginner or an advanced person. There will be experienced bonsai members and professionals on hand to help and teach you.

Go through workshops and theory where practical demonstrations help your advancement in the art.

Special Guest: Evan Marsh

Evan Marsh

Evan has been practising bonsai since 2012. From early on in his bonsai practice he decided to dedicate himself entirely to the art, with the dream of becoming a professional bonsai artist. His pursuit of knowledge and mastery in bonsai led him to pursue both tertiary education in plant sciences and the study of bonsai in Japan.

He has spent extensive time studying bonsai in Japan under the tutelage of both Koji Hiramatsu and Masahiro Sasaki, both regarded as some of the top Shohin Bonsai artists in Japan.

Collectively, he has studied in Japan for 11 months split across 3 different trips between 2015-2019. Along with the opportunity to participate in several overseas exhibitions including the Gafu-ten and Taikan-ten, where bonsai styled by him have been sold.

His time with Koji Hiramatsu, located in the Pine production area of Takamatsu, allowed him to experience and study the various growing techniques used during the development of Pine Bonsai.

Alongside his Bonsai studies, he undertook a Bachelors in Agricultural Science at the University of Sydney from 2014-2018. This degree gave him an extensive knowledge of all aspects of plant and soil science, along with fundamental knowledge in the fields of mycology, entomology, animal sciences, chemistry, and biology.



He is an active member of the Sydney Bonsai community, and has been involved with Nepean Bonsai Society, The School of Bonsai, and the “National” club. He has been a teacher for ‘The School of Bonsai’ for several years, along with currently serving as a member of the committee.

He currently works as a professional bonsai artist based in Western Sydney, where he styles and maintains trees for clients. He is also the co-founder of a vertical and controlled environment horticulture technology start-up.

Gathering About Bonsai (GAB 2024) cont...

Start. 17/08/2024

End. 18/08/2024

Schedule 2 sessions

1. 17/08/2024, 09:00 16:00 (AWST)

2. 18/08/2024, 09:00 16:00 (AWST)

Location: Block D, Tuart College Hodgson Street
(near corner of French St), Tuart Hill WA 606

Day Pass – \$65.00

Weekend Pass – \$110.00

Food: Light Lunch and drinks provided.

[Click here for registration](#)

Greetings, Bonsai Enthusiasts!

This July, immerse yourself in the world of miniaturised beauty and natural wonder at the Indonesia Bonsai and Suiseki Convention, set in the vibrant city of Surabaya. An unparalleled event that promises not just a convention, but an enriching journey into the heart of bonsai and Suiseki culture. With a fusion of art, nature, and community, this convention is your gateway to an unforgettable experience.

Why you should attend:

- **Expert Demonstrations:** Learn from the masters! Esteemed demonstrators with stellar reputations are gearing up to share their knowledge, skills, and passion for bonsai and Suiseki artistry.
- **Networking Galore:** Connect with fellow enthusiasts, experts, and artists. This convention is a melting pot of ideas, techniques, and inspirations—a chance to grow your network and friendships.
- **Cultural Immersions:** Beyond the leaves and stones, engage in a rich cultural experience with a welcome dinner, two exclusive lunches, a heartwarming farewell party, and an explorative city tour of Surabaya.
- **Learning and Appreciation:** Dive deep into workshops, exhibits, and sessions designed to broaden your understanding and appreciation of these ancient arts.

Event Details:

- **Locations:** Surabaya, Indonesia
- **Date:** 4th - 8th July, 2024
- **Registration Fee** USD 350 (includes welcome dinner, 2 lunches, farewell party, and city tour)
- **Accommodation:** \$40/\$75 a night (Paragon and Ciputra hotels)
- **Flights:** Return flights are currently around \$600.

This convention is more than an event; it celebrates beauty, discipline, and community. It is a rare opportunity to nurture your passion, meet like-minded souls, and create memories that will flourish like the bonsai you love.

If you have any more questions, contact Peter Odin at 9374 0555 or visit the website for further information and registration - <https://indonesiabonsaiconvention.com/>

Greetings Bonsai enthusiasts!

Discover the perfect substrate for your bonsai trees - our **Double Line Akadama** is hard-baked and dust free. With its exceptional quality and dust-free nature, your bonsai will thrive like never before. Available in three sizes: 1-3mm, 3-6mm, and 6-9mm. This premium Akadama guarantees optimal water retention and drainage.



But that's not all! We also offer **Ibaraki Hard Akadama**, another top-notch, and more traditional option for your bonsai collection. This variant shares the same high standards and quality as our Double Line Akadama, ensuring your trees receive the utmost care they deserve.



The double-line Akadama is \$ 52.00, and the double-line Ibaraki Akadama is \$ 56.00.

There is a 10% discount for members of BW and BSWA!!

Visit our store or explore our website to view our products and purchase options.

Phone: 9374 0555

Happy Bonsai-ing!



Bonsai Emporium
For all your bonsai supplies

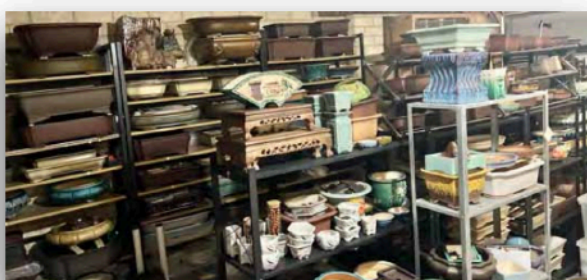
Visit our nursery & showrooms at
4433 West Swan Rd West Swan
www.bonsai-emporium.com



Welcome to Bonsai Plus! If you looking for high quality bonsai pots, you've come to the right place, the biggest range of bonsai pot in WA.

Each items are carefully selected, and some of rare items are hard to find in the market.

Our source of goods are directly imported from pottery artists in China, eliminating unnecessary fees for intermediaries, and ensuring that customers can buy the best quality products at the most favourable price.



Yixing and Shiwan, both of which have over thousands history and are world-renowned bonsai pot production places, and that's where our pots from.



Please call or message to arrange:
Herman
0430576297
149 Station St, East Cannington, WA.
hermanpang@hotmail.com

PUMICE AND RED LAVA ROCK FOR SALE!!

We have pumice available in: 3 - 5mm (S) and 8 - 15mm (M).

20l bags - \$38.00 a bag.

We have red lava rock available in: 1 - 3mm (S) and 3 - 8mm (M)

21l bags - \$38.00 a bag.

All products are uniform size, clean and dust free.

Pick up at Swan Valley Bonsai Emporium!

4433 West Swan Road, West Swan WA 6055

Phone: **9374 0555**



Bonsai Emporium
For all your bonsai supplies

Visit our nursery & showrooms at

4433 West Swan Rd West Swan

www.bonsai-emporium.com